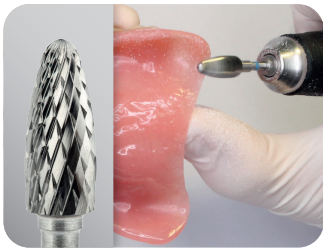


4SHINE CUTTERS

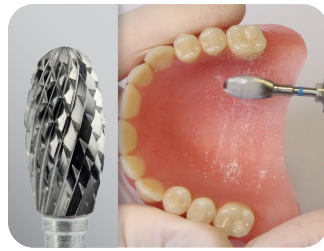
AC CUTTERS

CROSSCUT CUTTERS FOR PROCESSING ACRYLIC RESINS



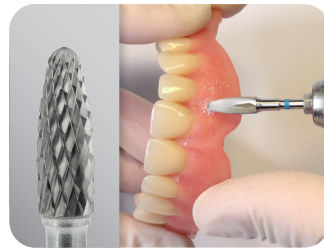
Opt. C 10.000-20.000 RPM
AC cutter 274.190.060

A large parabolic cutter with standard cross cuts for initial processing of acrylic resins, e.g., after deflasking.



Opt. C 10.000-20.000 RPM
AC cutter 277.190.060

Large elliptical cutter with standard cross cuts for processing and smoothing of the palatal surface of acrylic dentures.



Opt. C 10.000-20.000 RPM
AC cutter 273.190.040

Medium rounded cone cutter with standard cross cuts for detailing and smoothing acrylic dentures.

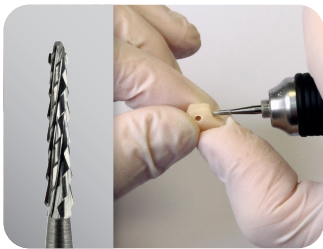


Opt. C 10.000-20.000 RPM
AC cutter 198.190.023

A small conical cutter with fine cross cuts for corrections that require accuracy.

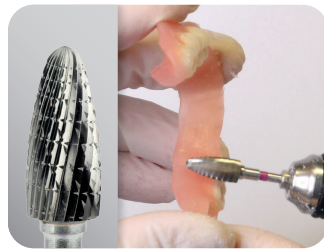
TC CUTTERS

CROSSWISE CUT CUTTERS FOR PROCESSING THERMOPLASTIC MATERIALS



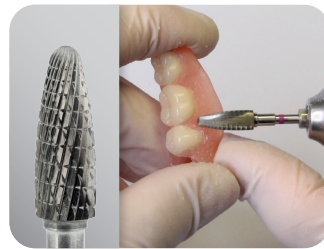
Opt. C 10.000-20.000 RPM
TC drill 408.298.016

Drill with special cuts for making retention canals in acrylic and composite teeth.



Opt. C 10.000-20.000 RPM
TC cutter 274.134.060

Large parabolic cutter with fine cross cuts for initial processing of thermoplastic materials, e.g., injection channels and denture rims.



Opt. C 15.000 RPM
TC cutter 274.134.050

Medium parabolic cutter with fine cross cuts for detailing and smoothing thermoplastic dentures.

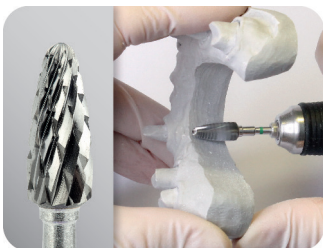


Opt. C 10.000 RPM
TC cutter 199.134.023

Small conical cutter with fine cross cuts for the correction of flexible dentures.

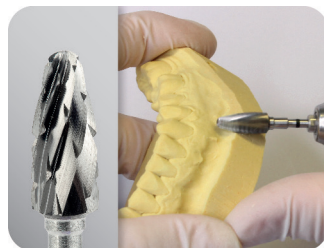
SC CUTTERS

CROSSCUT CUTTERS FOR PROCESSING STONES



Opt. C 8.000-12.000 RPM
SC cutter 274.220.060

Large parabolic cutter with thick cross cuts for processing dry dental stone models.



Opt. C 8.000-12.000 RPM
SC cutter 274.223.060

Large parabolic cutter with extra-thick cross cuts for machining wet dental stone models.

EC CUTTER

CUTTER WITH STRAIGHT CUTS FOR PROCESSING SOFT AND FLEXIBLE MATERIALS



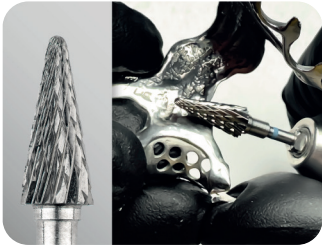
Opt. C 18.000-20.000 RPM
EC Cutter 274.176.060

Large parabolic cutter with very thick straight cuts and additional transverse cuts for processing soft and flexible materials.

4SHINE CUTTERS

MC CUTTERS

STANDARD CROSSWISE CUT CUTTERS FOR PRE-PROCESSING METAL ALLOY MATERIALS



Opt. \odot 15.000-20.000 RPM

MC cutter 266.190.060

Large cone-shaped cutter with rounded head and standard cross cuts for pre-processing of metal alloy structures.



Opt. \odot 15.000-20.000 RPM

MC cutter 274.190.050

Large parabolic-shaped cutter with standard cross cuts for pre-processing of metal alloy structures.



Opt. \odot 15.000-20.000 RPM

MC cutter 175.190.023

Small cone-shaped cutter with flat head and standard cross cuts for pre-processing of metal alloy structures.



Opt. \odot 15.000-20.000 RPM

MC cutter 141.190.023

Small cylindrical cutter with rounded head and standard cross cuts for pre-processing of metal alloy structures.

MC CUTTERS (SMOOTHING)

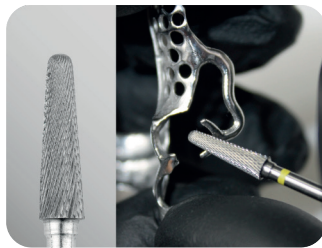
FINE CROSSWISE CUT CUTTERS FOR SURFACE PREPARATION OF METAL ALLOYS PRIOR TO POLISHING



Opt. \odot 15.000-20.000 RPM

MC cutter 274.110.060

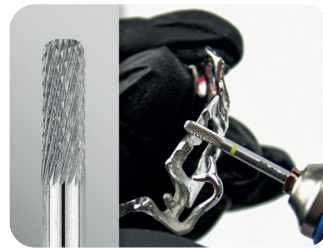
Large parabolic-shaped cutter with fine cross cuts for smoothing.



Opt. \odot 15.000-20.000 RPM

MC cutter 200.110.040

Medium cone-shaped cutter with rounded head and fine cross cuts for smoothing.



Opt. \odot 15.000-20.000 RPM

MC cutter 141.110.023

Small cylindrical cutter with rounded head and fine cross cuts for smoothing.



Opt. \odot 15.000-20.000 RPM

MC cutter 175.110.023

Small tapered bur with flat head and fine cross cuts for smoothing.



Opt. \odot 15.000-20.000 RPM

MC cutter 289.110.023

Small elliptical bur with fine cross cuts for smoothing.

Code	4Shine AC Cutters
TP4SAC01	198.190.023
TP4SAC02	273.190.040
TP4SAC03	274.190.060
TP4SAC04	277.190.060

Code	4Shine SC Cutters
TP4SSC01	274.223.060
TP4SSC02	274.220.060

Code	4Shine TC Cutters
TP4STC01	199.134.023
TP4STC02	274.134.050
TP4STC03	274.134.060
TP4STC04	408.298.016

Code	4Shine EC Cutters
TP4SEC01	274.176.060

Code	4Shine MC Cutters
TP4SMC01	266.190.060
TP4SMC02	274.190.050
TP4SMC03	175.190.023
TP4SMC04	141.190.023

Code	4Shine MC Cutters (smoothing)
TP4SMC05	274.110.060
TP4SMC06	200.110.040
TP4SMC07	175.110.023
TP4SMC08	141.110.023
TP4SMC09	289.110.023